



PT TRIKARSA JASATAMA

Freight Forwarding and PPJK



PT TRIKARSA JASATAMA

COMPANY PROFILE

Our Address

Komp. Sentosa Purnama Jaya Blok B No. 1-2,
Jalan Yos Sudarso, Batu Ampar - Batam

www.trikarsa.id

ABOUT COMPANY

Company Profile



PT Trikarsa Jasatama was established in July 16, 2000
As a services oriented company, we are committed not only meeting but exceeding our customer's expectation at all time and strive to achieve high standard of professionalism in the industry

MANAGEMENT

Supported by our qualified professional teams and associates in major cities in Indonesia and also in Singapore, we follow up and manage each transaction with quality service consistently.

OUR VISION

We intend to service our customers with our best quality service from the beginning to end.

OUR VISION

To participate in creating work opportunities, building quality and professional employees.



WHY PT TRIKARSA JASATAMA

Company Profile



Helping To Solve Your Problems

“Tailor-made logistics handling the specific needs of our customers.”

■ Quality

We aim to provide a safe, efficient, cost effective and innovative services for the complete satisfaction of our customers. We regard the business of our customers as our own, thus enabling the most careful analyzing and approach in moving the cargo. We apply constant monitoring as it is crucial to achieving the best outcome possible.



Management System

Company Profile

Standard ISO 9001:2015
Certificate Registr. No. 01 100 1735149



2018

2021

2024

2018-03-15 until 2021-03-14

2021-03-15 until 2024-03-14

2024-03-15 until 2027-03-14



Quality Policy

We strive to be the Leader Company in Providing quality services of “Custom Clearance, Inland Transportation, Sea Freight and Vessel charter” to meet or exceed the requirement of our customers and other interested parties, with the best quality, on time delivery and competitive price and meet statutory and requirements.

The management and staff of PT Trikarsa Jasatama are committed to achieve greater customer satisfaction by striving for continual improvement the effectiveness of the Quality Management System ISO 9000:2015 and overall performance in accordance with the Company Objective, the requirement of customers and other interested parties through stringent process control, teamwork and human resource development, in this sense the quality and reliability of our services are the responsibility for all employees.

OUR SERVICES

Company Profile



- Sea Freight & Vessel charter
- Inland Transportation
- Custom Brokerage
- Loading and Unloading
- Open yard and Indoor Storage



Sea Freight and Vessel Charter

- Various sizes of Tugs and Barges
- Various sizes of LCT and Cargo Vessels
- Associated with Vessel owners and regular liners



Inland Transportation

With the good support and well trained of staff and crews, it is our responsibility to deliver customer's goods and equipment in timely manner with safety as our first priority



OUR SERVICES



- Sea Freight & Vessel charter
- Inland Transportation
- Custom Brokerage
- Loading and Unloading
- Open yard and Indoor Storage

Custom Brokerage

We have been doing Customs Clearance since year 2001, for major companies. The export / import documents will be retained and maintained for 5 year to help our customers for possible future need / purposes

Loading and Unloading

Loading and unloading of your cargo are part of our services at most ports throughout Indonesia. We handle breakbulk to heavy lift cargo with implementing quality and safety standards

Open Yard and Indoor Storage

PT. Trikarsa Jasatama provide extensive multipurpose warehousing and storage facilities at Batam. Our warehouse facilities are suitably equipped for your equipment needs.



PROJECT REFERENCE

Company Profile



WE ARE COMMITTED TO MAINTAIN OUR QUALITY
PROVIDING THE BEST SERVICE FOR CUSTOMER SATISFACTION

2017 - 2024

BP TANGGUH ONSHORE EXPANSION EPC PRJ

CSTS JOINT OPERATION | Scope of Work : Time Charterparty for LCT 2000 DWT, LCT 1700 DWT, Barge 240 FT and Barge 270 FT.

2017 - 2020

BP TANGGUH ONSHORE EXPANSION EPC PRJ

CSTS JOINT OPERATION | Scope of Work : Transportation - Voyage by LCT 2000 DWT, Barge 250 FT and Barge 270 FT.

2025

BOOM CRANE DELIVERY

ALATAS INDONESIA | Scop of Work : Sea Transportation by Barge 300 FT (Bintan to Belanak FPSO).

2021

ROV EQUIPMENT

IKM SUBSEA SINGAPORE PTE LTD | Scop of Work : Sea Transportation by LCT 1000 DWT (Surabaya to Singapore).



Network: 29 Jan 2022 16.46.03 WIB
Local: 29 Jan 2022 16.46.01 WIB
-7°11'56.95" S 112°43'41.777" E

124 Jamrud Selatan Gudang
Perak Utara
Kecamatan Pabean Cantian
Kota Surabaya
Jawa Timur

Remark: PT Trikarsa Jasatama : LCT Transindo 1

PROJECT REFERENCE

Company Profile



**WE ARE COMMITTED TO MAINTAIN OUR QUALITY
PROVIDING THE BEST SERVICE FOR CUSTOMER SATISFACTION**

2016

JANGKRIK POST TRENCING

OFFSHORE CONSTRUCTION SPESIALISTS PTE LTD | Scope of Work : Sea Transportation (Vessel Charter) Batam to Balikpapan and Balikpapan to Batam.

2015 - 2016

SEAMLESS STEEL PIPE TPCO BATAM FOR CHEVRON THAILAND

INFINITI MARINE Pte Ltd / CHEVRON THAILAND | Scop of Work : Port Agency, Land Transportation, Stevedoring and Customs Clearance.

2015

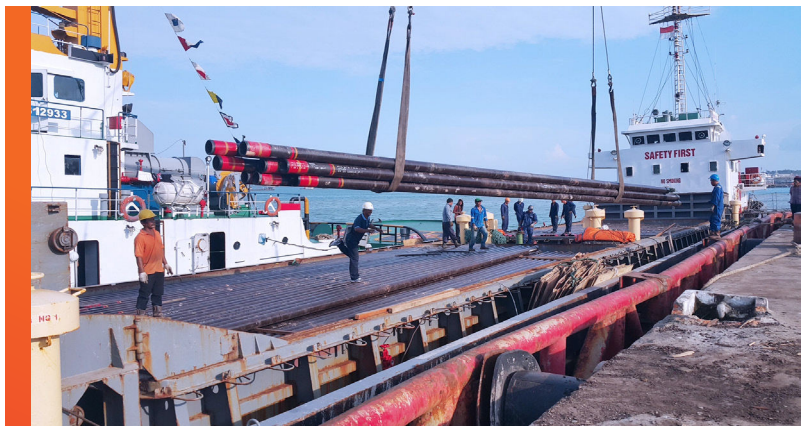
PONDOK MAKMUR DEVELOPMENT PROJECT PHASE-1

HEAT EXCHANGER INDONESIA | Scope of Work : Sea Transportation, Land Transportation, Stevedoring and Customs Clearance.

2015

TAIF-HEAVY RESIDUE CONVERSION COMPLEX

KNM PROCESS SYSTEM sdn | Scope of Work : Sea Transportation, Land Transportation, Stevedoring and Customs Clearance.



PROJECT REFERENCE

Company Profile



WE ARE COMMITTED TO MAINTAIN OUR QUALITY
PROVIDING THE BEST SERVICE FOR CUSTOMER SATISFACTION

■ 2015

EPC AREA 13 NORTH DURI DEVELOPMENT PROJECT

PT WIJAYA KARYA (PERSERO) Tbk | Scope of Work : Sea Transportation, Land Transportation, Stevedoring and Customs Clearance.

■ 2013-2015

SENORO GAS DEVELOPMENT

TRIPATRA ENGINEER & CONSTRUCTOR | Scope of Work : Sea Transportation (Vessel Charter), Land Transportation, Stevedoring and Customs Clearance.

■ 2015

EPC NDD 13 CHEVRON

HEAT EXCHANGER INDONESIA | Scope of Work : Sea Transportation, Land Transportation, Stevedoring and Customs Clearance.

■ 2014

BUT TOTAL E&P INDONESIA MENTAWAI BV

ALATAS GROUP | Scope of Work : Sea Transportation, Land Transportation, Stevedoring and Customs Clearance.



PROJECT REFERENCE



WE ARE COMMITTED TO MAINTAIN OUR QUALITY
PROVIDING THE BEST SERVICE FOR CUSTOMER SATISFACTION

■ 2018 -

PT STEELFORCE INDONESIA

Scope of Work : Sea Transportation, Open Yard, Land Transportation and Customs Clearance.

■ 2016 -

PT ANDARU STEEL ONE

Scope of Work : Sea Transportation, Open Yard, Land Transportation and Customs Clearance.

■ 2015 -

PT SUMITOMO INDONESIA

Scope of Work : Sea Transportation, Open Yard, Land Transportation and Customs Clearance.

■ 2015 - 2018

PT SPARROWS SERVICES BATAM

Scope of Work : Sea Transportation, Open Yard, Land Transportation and Customs Clearance.

■ 2001 - 2015

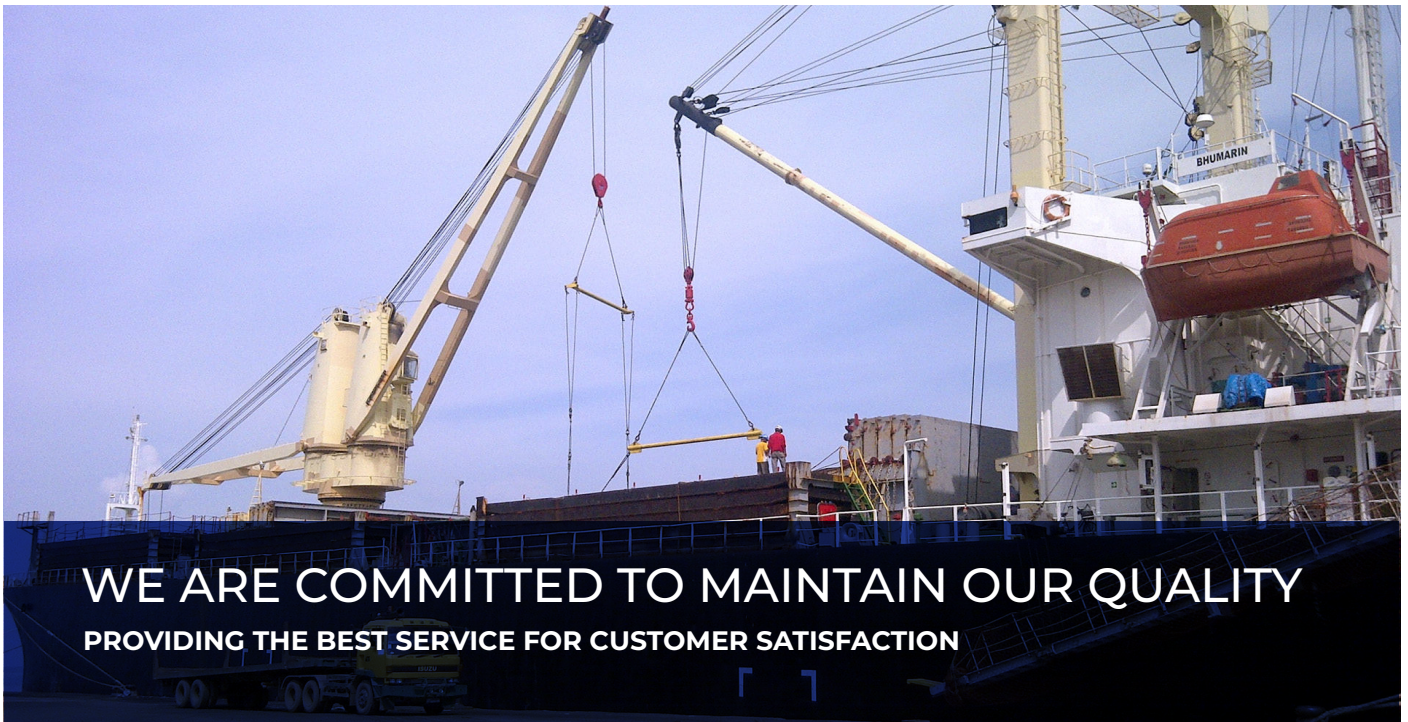
PT VETCO GRAY INDONESIA

Scope of Work : Open yard, Land Transportation and Customs Clearance (in-house document agent).



PROJECT REFERENCE

Company Profile



WE ARE COMMITTED TO MAINTAIN OUR QUALITY
PROVIDING THE BEST SERVICE FOR CUSTOMER SATISFACTION

■ **2003 - 2015**

PT WINSTAR LOGISTIK

Scope of Work : Customs Clearance (in-house document agent).

■ **2000 - 2003**

PT PETROLOG NAIGAI NITTO

Scope of Work : Customs Clearance (in-house document agent).





TRIKARSA GROUP

**PT. Trikarsa Jasatama
Freight Forwarding & PPJK**

**PT Galang Usaha Mandiri
General Trading**

**PT Galang Usaha Properti
Property Agent**



Address :

Head Office :
Komplek Sentosa Purnama Jaya, Blok B No. 1-2
Jl. Yos Sudarso, Batu Ampar - Batam, 29453

Branch Office :
Perumahan Permata Puri Media,
Ruko Blok C2 No. 24, Keembangan - Jakarta Barat



Phone

+62 778 458 048 /
+62 812 7039 888

Email

marketing@trikarsajasa.com

Website

www.trikarsa.id